

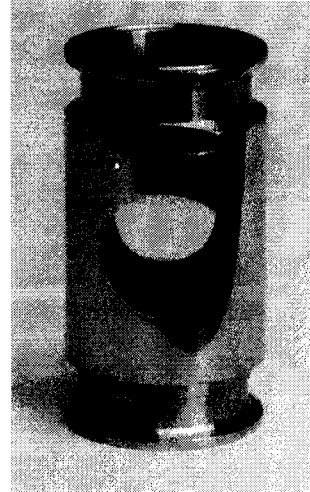
PF

# Primary Flowpoints

## Style H Hygienic Sight Glass

This double window straight through tube sight glass is ideal for you to visually check the presence, colour and condition of a liquid.

- ◆ Full bore path
- ◆ Hygienic design
- ◆ CE marked and PED compliant
- ◆ Pressures up to 10 bar
- ◆ Temperatures up to 200 °C
- ◆ Short lead times
- ◆ Designed and manufactured in the UK



### Application

The style H hygienic sight glass has a plain straight through borosilicate glass tube with stainless steel hygienic tri-clamp ends and is used to check for the presence of a liquid where there is intermittent flow, partially filled lines or entrained air. It can be used in vertical or horizontal lines.

### Construction

The standard end connections are hygienic tri-clamp made from polished 316 stainless steel whilst other hygienic specifications and materials can be supplied. The two stainless steel parts are screwed together retaining the borosilicate glass tube and giving it a rigid construction. The standard seals are viton o rings giving excellent chemical resistance. Silicone seals that are FDA approved can be supplied.

The internal diameter of the end connections and glass match those of the line so that it is free draining and avoids the possibility of fluid retention.

### Options

We can supply sight glasses in special materials such as duplex and super duplex stainless steels. They can also be supplied conforming to NACE MR0175. Where there is a risk of accidental damage a protective polycarbonate knock shield can be inserted to protect the glass tube.

### Quality

All flowpoints indicators are manufactured to the highest standards. The quality system is independently audited by BSI and certified to ISO 9000. The indicators are fully PED compliant and CE marked where required. TUV are our external auditors for the Pressure Equipment Directive.

Full material traceability is maintained and material certificates and pressure test certificates are supplied on request.

**Tel: 01922 650009**

**Fax: 01922 640326**

## Specification Code

Code		Description
SH		Stainless steel body 316 S11
	B	Borosilicate glass
	020 025 040 050 080 100	Indicator Size 20 mm / 3/4" 25 mm / 1" 40 mm / 1 1/2" 50 mm / 2" 80 mm / 3" 100 mm / 4"
	8 5 9	Hygienic End Connection Tri-clamp ISS RJT

## Materials of Construction

Ends - 316 Stainless steel  
Glass Tube - Borosilicate  
O Ring Seals - Viton or silicone

## Dimensions

Part Number	Size (nb)	L mm	D mm	Max Pres bar
SHB-020-8	3/4"	100	20	10
SHB-025-8	1"	100	25	10
SHB-040-8	1 1/2"	100	40	6
SHB-050-8	2"	110	50	6
SHB-080-8	3"	130	80	6
SHB-100-8	4"	150	100	6

