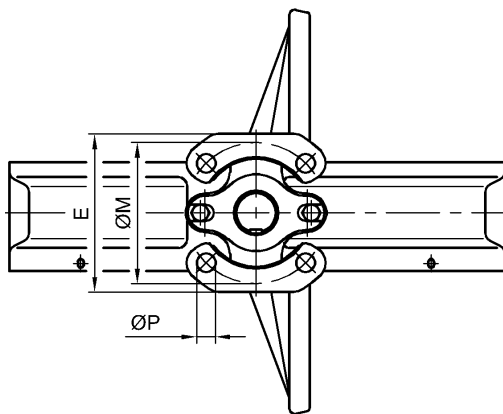
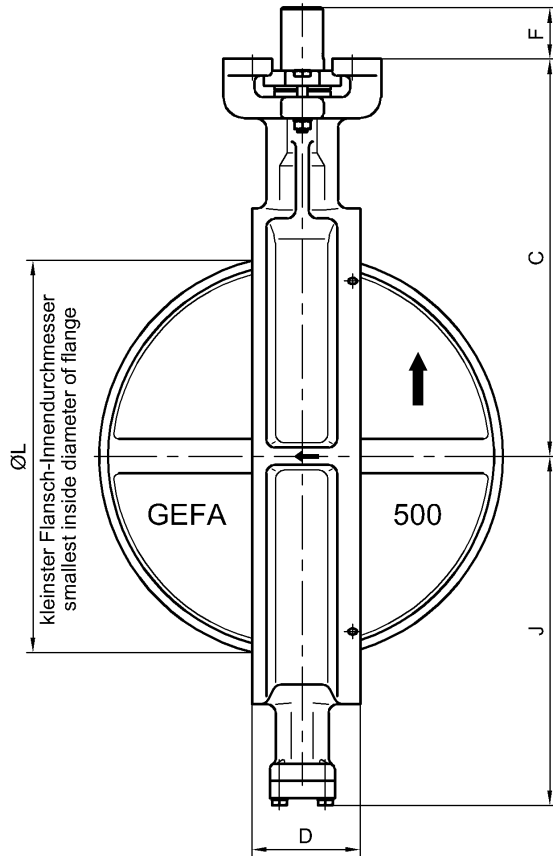
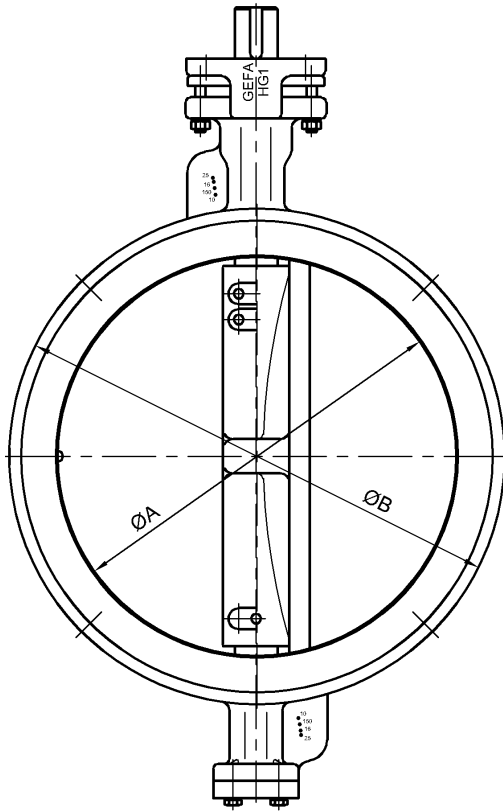


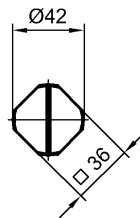
Maße / Dimensions Hochleistungsclappe Serie HG1 high performance butterfly valve series HG1 DN 350 - DN 500

Baulänge: EN 558-1 Reihe 20 (DIN 3202-K1)
 Kopfflansch: ISO 5211

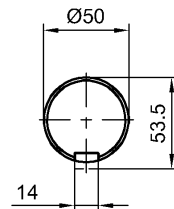
Face to face dimension: EN 558-1 line 20 (DIN 3202-K1)
 Mounting plate: ISO 5211



DN 350



DN 400 / DN 500



Paßfeder DIN 6885
 Key DIN 6885

| DN | NPS | $\varnothing A$ | $\varnothing B$ | C | D | E | F | J | $\varnothing L$ | M | nx $\varnothing P$ | Kopfflansch Mounting plate ISO 5211 | kg |
|-----|-----|-----------------|-----------------|-----|-----|-----|----|-----|-----------------|-----|--------------------|---|-----|
| 350 | 14" | 318 | 415 | 365 | 78 | 145 | 38 | 312 | 321 | 140 | 4x18 | F 14 | 51 |
| 400 | 16" | 362 | 470 | 405 | 102 | 185 | 60 | 351 | 363 | 165 | 4x22 | F 16 | 79 |
| 500 | 20" | 467 | 580 | 465 | 127 | 185 | 60 | 409 | 468 | 165 | 4x22 | F 16 | 118 |

Änderungen vorbehalten
 subject to changes